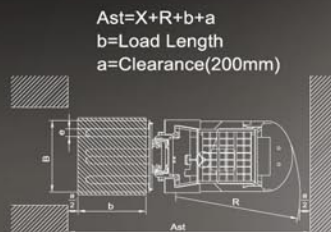
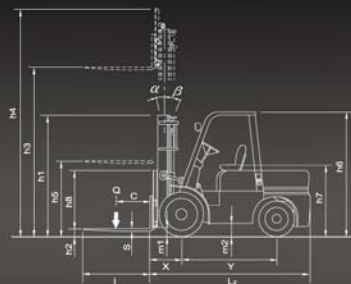


## Tailift's Commitment & Vision

- To be a strong partner
- Provide the toughest trucks for even the most challenging applications
- Environmentally friendly with less emissions and the lowest fuel consumption
- To extend customer service worldwide to satisfy all customer need

# 1.5-5.0ton

## I.C FORKLIFT TRUCKS



## Specifications FD:Diesel FG:Gasoline

Model			FD15/18 FG15/18	FD20/25 FG20/25	FD30/35 FG30/35	FD40/45/50 FG40/45/50
Capacity	kg		1500/1800	2000/2500	3000/3500	4000/4500/5000
Load center	mm		500	500	500	600
Control type			Sit	Sit	Sit	Sit
Total width(Std/front wheel)	B	mm	1065	1158/1532	1290/1655	1450/1680
Lift	h3	mm	3000	3000	3000	3000
Height mast lowered	h1	mm	2000	2000	2000	2190
Height mast extended	h4	mm	4220	4220	4220	4220
Length to face of forks	L2	mm	2235/2260	2460/2505	2600/2860	3110/3160/3310
Overhead guard height	h6	mm	2070	2110	2140	2290
Tires	S=Solid P=Pneumatic		front/rear	P/P	P/P	P/P
	Number (front/rear, X Driven)			2 / 2	2 / 2	2 / 2
	Size					
	front	AA	6.50-10-10P.R.	7.0-12-12P.R.	8.15-15-12P.R.	300-15-20P.R.
	rear	BB	5.00-8-8P.R.	6.00-9-10P.R.	6.50-10-10P.R.	7.0-12-12P.R.



Tailift I.C 1.5-5.0 ton Forklift Trucks

## Tailift Group

### GROUP HEAD OFFICE :

No. 269, Sec 1, Shein Lin Rd., Taichung, Taiwan. (R.O.C.) TEL:+886-4-25666100 FAX:+886-4-25671670  
Website: <http://www.tailift.com.tw> E-mail: [insales@tailift.com.tw](mailto:insales@tailift.com.tw)

### TAIWAN MAIN OFFICE ( I ) :

No.170,Cheng Kung 3rd Rd.,NanKang,Nantou 540,Taiwan(R.O.C) TEL:+886-49-2254300 FAX:+886-49-2254302

### TAIWAN MAIN OFFICE ( II ) :

No.5,Zhihi 1st Rd., NanKang,Nantou 540,Taiwan(R.O.C) TEL:+886-49-2263800 FAX:+886-49-2258979





# Fit All Your Need

Innovative & Revolutionary Forklift Truck

Based in Taiwan, was established in 1973.

Tailift group is one of the world's leading manufactures of material handling equipments.

Tailift is an ISO 9001 quality management system company. All series are obtained with CE and EPA certification.

Tailift forklift truck involved the best in virtual, bench and field-testing to ensure the final product met the high quality standards demanded. Tailift forklift bring you great comfort and unmatched productivity.

Each of these advancements demonstrates Tailift's commitment to be a strong partner and provide the toughest trucks for even the most challenging applications.

## Features and Benefits

Easy Operation / High Stability / Durability / Great Performanc / Ergonomics / Optimal Visibilitye / Easy Maintenance

# Easy Operation

Extensive operation compartment provide an unobstructed view in any positions. An easy-operating control translates into better performance and product efficiency.



## Electric F/R control lever

The forward/reverse lever offers easily accessible fingertip control. It is easy to reach and also for fast and easy directional changes. Using the electric solenoid to control F/R is also improved flexibility of operation.



## Light Lever

The lever is integrated into the electric F/R lever. It is combination of light switch and turn signal.

## Steering wheel with assist knob

This steering wheel gives improved vehicle maneuverability. It amplifies operator's effort.



## Parking Brake Lever with Inter-lock

The lever is released by click the top button pressed and further improves safety.

## Easy Entry and Exit

Low height from floor and secure nonslip steel step let operation easy to step into and out of the forklift.

## New Multifunctional Cobo Instrument Panel

A large and easy-to-see multifunctional display is perfectly centrally located in front of the eye of the operator. This new multifunctional panel provides all information necessary for the operator and service maintenance.



- |                                |                                  |
|--------------------------------|----------------------------------|
| <b>A</b> Warning check         | <b>G</b> Charge warning          |
| <b>B</b> Hydraulic temperature | <b>H</b> Head light              |
| <b>C</b> Oil pressure warning  | <b>I</b> Fuel gauge              |
| <b>D</b> Brake light           | <b>J</b> Hour meter              |
| <b>E</b> Neutral Gear          | <b>K</b> Water temperature gauge |
| <b>F</b> Directional Indicator |                                  |



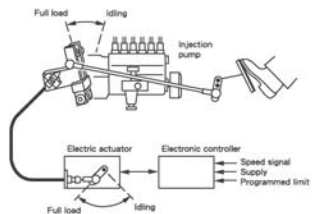
## Tiltable Steering Column

The steering column can be adjusted and help to provide the preferred driving position.

# High stability

The Tailift's new forklift truck features provide greater stability. Full range of safety equipments and features that help operator and reduces the risk of accidents.

## Speed Limiter (optional)



## Integral Heavy Duty Overhead Guard & Chassis

No-bolt completely welds to form a one piece of rigid overhead guard and chassis. This one piece construction gives additional strength to the entire structure. This structure allows truck to be use on uneven surfaces for long working period and not bend.



## Mast Lock System (optional)

The mast lock system automatically locks all lifting and tilting functions when the operator leaves the seat. It is to prevent operator from using the hydraulic functions and drive forklift truck when operator is not seat in proper position.



## Tilt Cylinder Boots (optional)

Reduce hydraulic leaks by limiting cylinder rod scouring and seal damage caused by dirt accumulation.



## Asbestos Free Brake Shoe

High-friction brake shoes are free of asbestos.

## ▲ High Mounted Rear Combinational Lights

The rear combinational light can be optional mount on top of overhead guard. It is to improved visibility in the working place.

## Neutral Safety Start System

The electric F/R lever has to be in neutral position before the engine can be started.



# Great Performance

High performance, Fuel efficient , Emission control engines

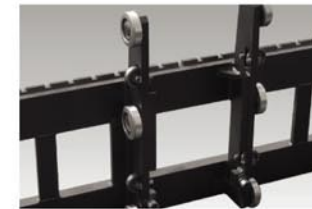
Tailift forklift trucks use world well know engines meet and comply with the EU stage III and US EPA tier III regulations of Directive 97/68. LOW EMISSION AND LOW NOISE to protect environment. All diesel , gasoline and LPG engine environmentally friendly with advanced combustion technology reducing fuel consumption.

## Tailift transmissions

MD series transmission 1.5-3.5T with single-speed and 4-5T with two speed forward & reverse, hydrodynamic transmission perfectly tuned, allows the best precision and smoothness in handling activities. The electric F/R lever gives the operator easy directional control without removing a hand from the steering wheel.



Torque converter



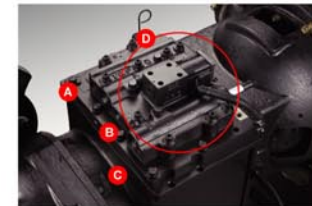
## Standard Fork Carriage ( 6 rollers)

All mast assembly has a 6-roller carriage that is standard on Tailift forklift truck. This make lifting more smooth and increased capacity. 1220mm high load bracket is standard for increased load control and operator protection.



## Hydraulic Lift Cylinder Safety Check Valve

The cylinder has been new design by adding safety check valve to absorb mast drop speed automatically to avoid crashed floor and damage goods, also reduced noise.



## Tailift Self-design Power-shift Transmission

- A 35micron filter with check valve
  - B 125 mesh shielded sump strainer
  - C magnetic drain plug
  - D Solenoid control valve
- 10 discs in clutch packs 5 steel&5 fiber composite
  - each transmission is bench tested
  - easy disassembly for rebuilds



## Tailift Hydraulic Steer Axle

The great durability new rear axle, increased steer angle and steering control for easy manueving and lower maintenance.

# Optimal Visibility & Ergonomics

High level of operator visibility



*High level*



Backward visibility



Forward visibility

Tailift continues to invest in R&D to improve quality and versatility, in order to obtain the best reputation and increase the international market share. We have added to the cushion tire lift truck, with its simple, yet well-built molding. By tremendously reducing its turning radius our lift truck is the best choice to work in a narrow aisle workplace.



## Joystick hydraulic control (optional)

The joystick hydraulic control system use hydraulic lever for lifting/lowering forks and tilt mast. The design provides greater ergonomics and improves productivity. Also provide comfortable armrest attached to the seat.



New Front Cowl



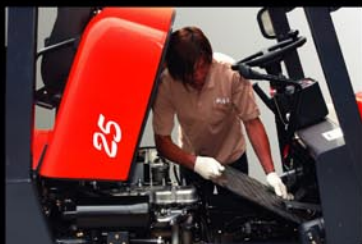
Large Foot Space



## Deluxe Suspension seat (optional)

Grammer suspension seat give you the very best in customized comfort and safe, healthy posture. Features with ergonomic shape design, suspension travel to accommodate operator weight, generous Fore/Aft, seat belt and seatback angle adjustment to optimize your comfort, posture and performance.

# Easy Maintenance



## Non-bolt floorboard

The floorboard can be easily removed without tools. Reduce time and quick access for service operations.



## Insulated Engine Cover

Engine cover has gas-filled cylinder with an automatic locking device to assist in opening and to prevent the cover from unexpectedly closing. Easy service access reduces maintenance time. Large open space allows engineer easy maintenance.

# Engine

Available Model		FD15-25	FD20-35	FD20-35	FD15-25	FD20-35
Manufacturer		ISUZU	ISUZU	ISUZU	YANMAR	YANMAR
Model		C240PKF-23	4JG2	4CG2	4TNE92	4TNE98
Output	kw	34.3	44.9	44.1	33.4	44.1
Speed	rpm	2500	2450	2725	2725	2725
No. of cylinders / displacement	—/c.c.	4 / 2369	4 / 3059	4 / 3319	4 / 2659	4 / 3319

Available Model		FG15-25	FG15-35	FD40-50	FD40-50	FG40-50
Manufacturer		NISSAN	NISSAN	PERKINS	NISSAN	NISSAN
Model		K21	K25	1104D-44	TD-42	TB-42
Output	kw	32	38	56	63	69
Speed	rpm	3200	3200	2200	2300	2400
No. of cylinders / displacement	—/c.c.	4 / 2065	4 / 2488	4 / 4400	6 / 4169	6 / 4169

# Options



swing-out LPG bracket



counterweight type



Duel wheel



Upward Exhaust Pipe I



Upward Exhaust Pipe II



Rain Guard (optional)



Super-elastic tire



Pre-cleaner engine air intake



Cabin



Cabin



Side shift



Hinged Fork



Rotating Fork



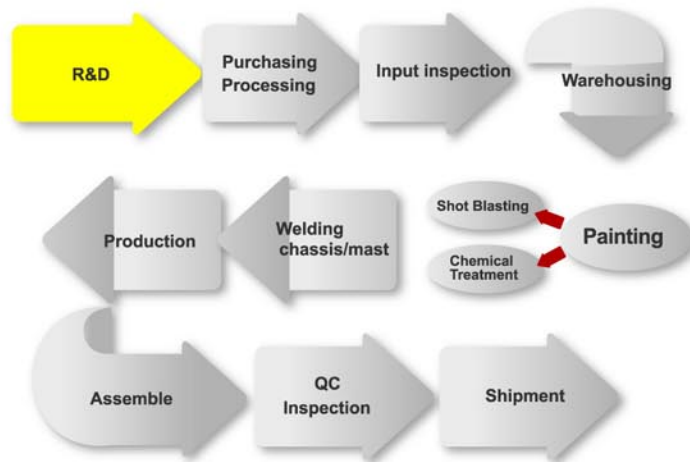
Shovel



Bale Clamp



# Quality Control



R&D



Automatic production line



QC



Chemical Treatment



Shot Blasting



Flow spray



Power spray

## Equipment And Accessories

● STANDARD ○ OPTIONAL

	FD15 FG15	FD20 FG20	FD25 FG25	FD30 FG30	FD35 FG35	FD40 FG40	FD45 FG45	FD50 FG50
Integral heavy duty overhead guard	●	●	●	●	●	●	●	●
Overhead air intake system	●	●	●	●	●	●	●	●
Asbestos free brake shoe material	●	●	●	●	●	●	●	●
Full hydraulic power steering	●	●	●	●	●	●	●	●
2-spool control valve with pressure relief	●	●	●	●	●	●	●	●
Horizontal brake	●	●	●	●	●	●	●	●
Power-assisted brake	●	●	●	●	●	●	●	●
Hi-visibility, wide view mast	●	●	●	●	●	●	●	●
ITA Class carriage	●	●	●	●	●	●	●	●
Load backrest	●	●	●	●	●	●	●	●
1070mm forks(Cascade Kenhar)	●	●	●	●	●	●	●	●
Electric F/R control lever	●	●	●	●	●	●	●	●
Lift and tilt levers	●	●	●	●	●	●	●	●
Parking brake lever with inter-lock	●	●	●	●	●	●	●	●
Fuel water sedimenter(Diesel)	●	●	●	●	●	●	●	●
Return hydraulic filter	●	●	●	●	●	●	●	●
Transmission oil filter	●	●	●	●	●	●	●	●
Front combination lights(turn signal, )	●	●	●	●	●	●	●	●
Rear combination lights (turn signal,tail brake, back-up)*	●	●	●	●	●	●	●	●
Front head lights	●	●	●	●	●	●	●	●
Operator tool kit	●	●	●	●	●	●	●	●
Side view mirrors(R/L)	●	●	●	●	●	●	●	●
Charge indicator	●	●	●	●	●	●	●	●
Engine check indicator	●	●	●	●	●	●	●	●
Engine oil pressure warning indicator	●	●	●	●	●	●	●	●
Fuel gauge	●	●	●	●	●	●	●	●
Glow indicator	●	●	●	●	●	●	●	●
Hourmeter	●	●	●	●	●	●	●	●
Neutral safety switch	●	●	●	●	●	●	●	●
Water temperature gauge	●	●	●	●	●	●	●	●
High/Low speed setting	●	●	●	●	●	●	●	●
Dual operator assist grip	●	●	●	●	●	●	●	●
Non-slip floor mat	●	●	●	●	●	●	●	●
Super-elastic solid tires	○	○	○	○	○	○	○	○
Cushion tires	○	○	○	○	○	○	○	○
Wide tread tires	○	○	○	○	○	○	○	○
Dual front wheel	○	○	○	○	○	○	○	○
High, wide type of load backrest	○	○	○	○	○	○	○	○
Wide type fork carriage	○	○	○	○	○	○	○	○
Deluxe suspension seat with seat-belt	○	○	○	○	○	○	○	○
Mast Lock system(Lift/Tilt)	○	○	○	○	○	○	○	○
Hinged forks	○	○	○	○	○	○	○	○
Tilt cylinder boots	○	○	○	○	○	○	○	○
Steel Cabin	○	○	○	○	○	○	○	○
Heater (steel cabin)	○	○	○	○	○	○	○	○
Windshield with wiper	○	○	○	○	○	○	○	○
Pre-cleaner	○	○	○	○	○	○	○	○
Exhaust pipe, upward	○	○	○	○	○	○	○	○
Adjustable overhead guard	○	○	○	○	○	○	○	○
Back-up buzzer	○	○	○	○	○	○	○	○
Rear head lights	○	○	○	○	○	○	○	○
Emergency flash light(Yellow/Red)	○	○	○	○	○	○	○	○
Torque converter oil pressure gauge	○	○	○	○	○	○	○	○
Fire extinguisher	○	○	○	○	○	○	○	○
Fan	○	○	○	○	○	○	○	○
Rain Guard	○	○	○	○	○	○	○	○
Hook on sideshift	○	○	○	○	○	○	○	○
Integral sideshift	○	○	○	○	○	○	○	○
Joystick hydraulic controls	○	○	○	○	○	○	○	○
Swing-out LPG bracket	○	○	○	○	○	○	○	○
Fork extension sleeves	○	○	○	○	○	○	○	○
Fork positioner	○	○	○	○	○	○	○	○
Front cowl cover	○	○	○	○	○	○	○	○